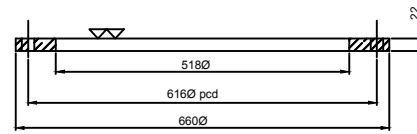
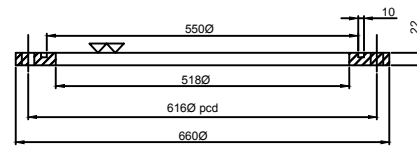


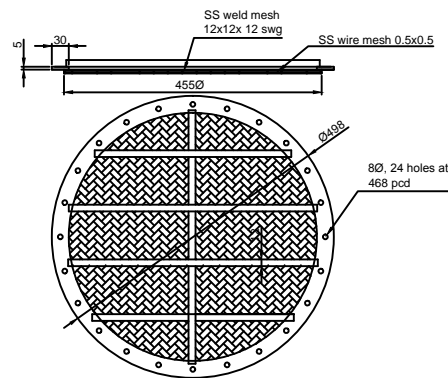
HYBRID BED



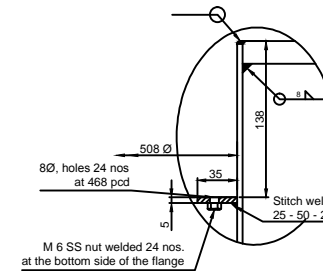
Top Flange 1 no.



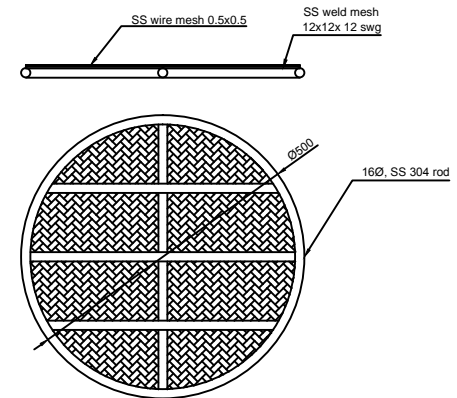
Bottom Flange 1 no.



Detail A

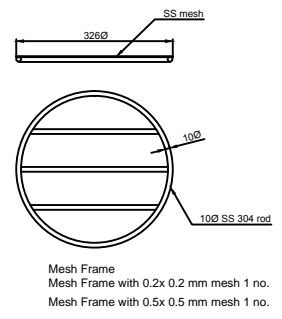
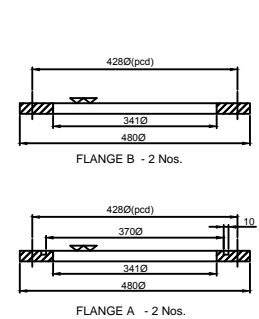
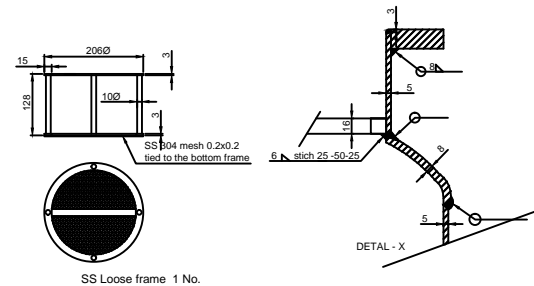
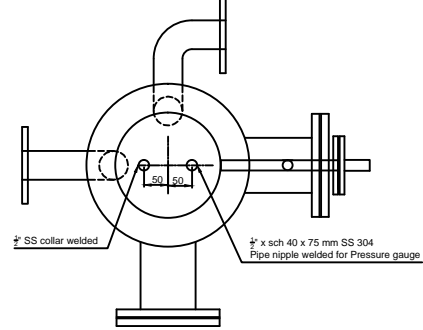
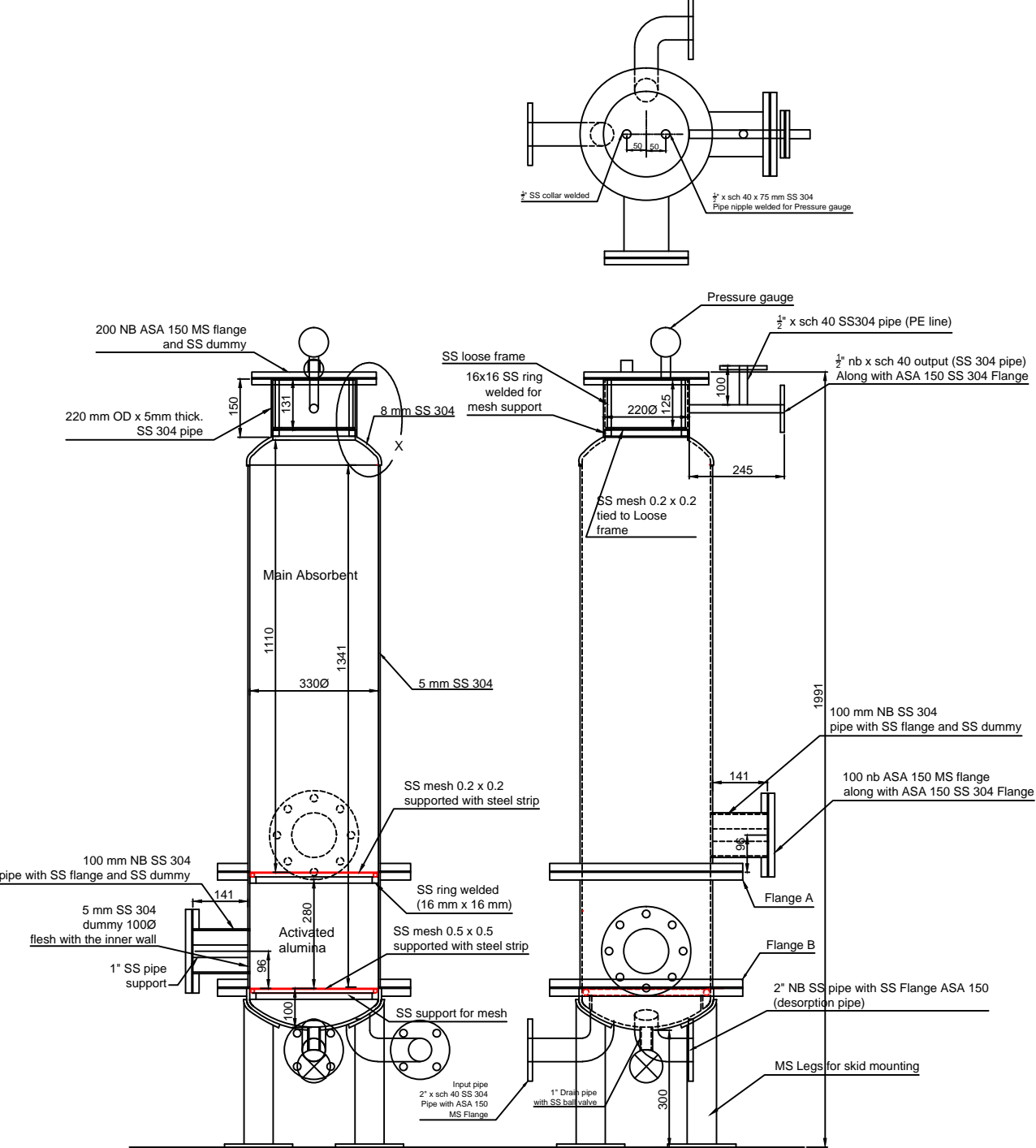


Detail X



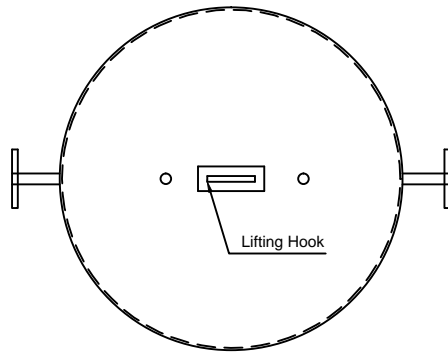
Suitable legs to be provided for the Mesh frame to get 120 mm clear gap at the bottom side of the mesh from vessel bottom

Detail B



PSA VESSEL / ADSORBER - 2 Nos.

Material Body AISI 304
 Flanges MS (IS 2062)
 Working Pressure 10 bar
 Test Pressure 20 bar



OXYGEN STORAGE VESSEL

Internal Diameter 28" (712 mm)
 Height 74 1/2" (1890mm)
 Material - Body AISI 304
 Working Pressure 10 bar
 Test Pressure 20 bar